

Restorative Clinical Cases

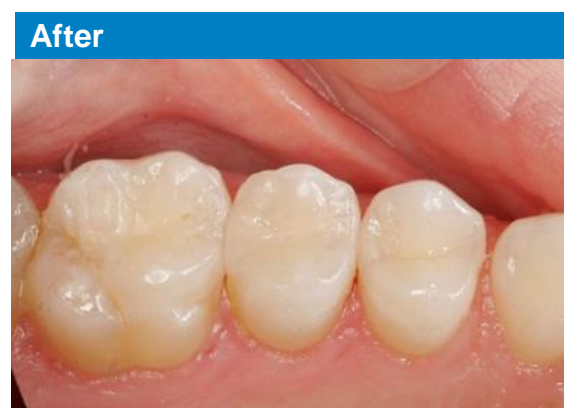
Author: Dr. Stephen D. Poss
Origin: Tennessee/USA
Date: 2016
Brands: Palodent® V3, SDR®, Enhance®

DO Composite Resin on Tooth #4

A 32-year old female came to the office with a chief complaint of thermal sensitivity on her upper right maxillary area. An X-ray revealed distal decay on tooth number 4.

A conservative disto-occlusal composite was determined to be the most ideal treatment after the caries was removed.

Even though the shade of the tooth was a B-1 VITA shade, an A-1 shade was used to demonstrate the chameleon blending effect of the universal composite being used.



Dr. Stephen D. Poss
Tennessee/USA

Dr. Poss graduated from the University of Tennessee in 1983. He has directed numerous live patient continuums at various teaching institutes on aesthetic anterior and posterior restorations. He is also on the editorial team of the Reality Publishing evaluating dental products. Dr. Poss lectures internationally on esthetic dentistry, sleep apnea and TMD. Dr. Poss is a Diplomate with the ACSDD in dental sleep medicine and a Fellow with the American Academy of Craniofacial Pain. He is an active consultant to several dental manufacturers in the area of new product development and refinement. He has had numerous articles published in most of the leading dental journals. He maintains a restorative and TMD practice in Brentwood, Tennessee.

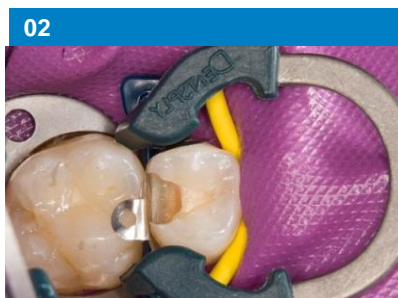
Restorative Clinical Cases

Author: Dr. Stephen D. Poss
Origin: Tennessee/USA
Date: 2016
Brands: Palodent® V3, SDR®, Enhance®

DO Composite Resin on Tooth #4



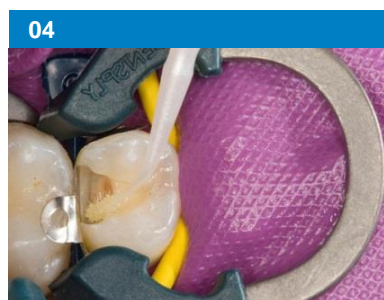
01 Pre-operative radiograph. Note the carious lesion on the distal of tooth No. 4.



02 Isolation of the completed preparation on tooth No. 4 using a rubber dam and the Palodent® V3 Sectional Matrix System.



03 Application of tooth conditioner gel to the preparation of tooth No. 4 using a selective-etch technique.



04 The universal adhesive is scrubbed into the preparation on tooth No. 4 for 20 sec, then air dried for 5 sec.



05 The first restorative layer is placed with SDR®, bulk fill flowable base material that can be placed in up to 4mm layers.



06 Placement of the final restorative layer using a universal composite and subsequent light cure of 20 sec.



07 Reduction and gross contouring of occlusal surface via fluted composite finishing bur.



08 Final contouring and finishing using Enhance® Finishing cups, discs, or points.



09 Final restoration, tooth No. 4-DO. Note the excellent color blending, contour, and interproximal contact.

Conclusion and references

The choice of the restorative materials plays an important role in the overall success of the restoration.

Palodent® V3 Sectional Matrix System successfully recreates the patient's tooth anatomy, provides a great marginal seal and easily creates a tight contact. SDR®, bulk fill flowable base material offers a fast, easy and reliable filling technique. Within a few seconds, dispensed SDR® self-levels to achieve excellent cavity adaptation, eliminating the need for further manipulation with hand instruments. It can efficiently be placed in up to 4 mm increments while keeping shrinkage stress to a minimum. Used with a universal adhesive in a selective-etch technique, and a universal composite with easy handling and great esthetic qualities, these materials work together to provide a long-lasting, esthetic restoration and a satisfied patient.



Palodent® V3
Starter Kit



SDR®
Smart Dentin Replacement
Intro Kit